

## AE7 EV Fuse



### FEATURES:

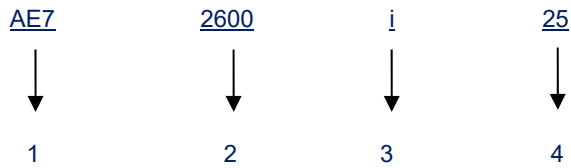
- 800 VDC EV high-speed power fuse
- Rated Current: 60 -150 A (25x66)  
175-400A (38x72)  
450-600A (51x72)
- Breaking Capacity: 50 kA
- Time Constant:(L/R) $2 \pm 1$  ms
- Dimensions: 25x66 mm, 38x72mm,51x72 mm
- Special purpose fuse for EV/HEV automotive use
- For high power EV PDU and battery protection
- Ref. To UL248-20; IEC 60269-4
- Recommended fuse holder: BFR094-35-M8,  
BFR099-70-M10

### ELECTRICAL SPECIFICATIONS

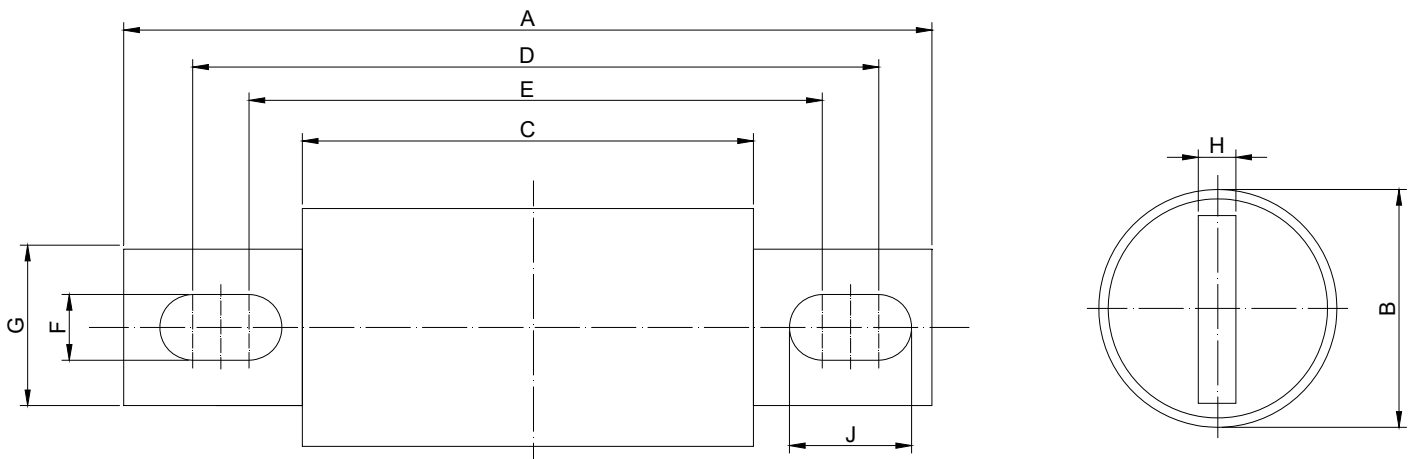
| Size (mm) | Part Number | Rated Current | Ampere Code | Rated Voltage | Breaking Capacity | Melting I <sup>2</sup> t (A <sup>2</sup> S) | Clearing I <sup>2</sup> t (A <sup>2</sup> S) | Dissipation(W) |
|-----------|-------------|---------------|-------------|---------------|-------------------|---|--|----------------|
|           |             |               |             |               |                   |   |  | 0.5In          |
| 25x66     | AE72600i25  | 60 A          | 2600        | 800 VDC       | 50kA              | 5880  | 15373  | 3.00           |
|           | AE72700i25  | 70 A          | 2700        |               |                   |   |  | 3.50           |
|           | AE72800i25  | 80 A          | 2800        |               |                   |   |  | 4.00           |
|           | AE73100i25  | 100 A         | 3100        |               |                   |   |  | 5.00           |
|           | AE73125i25  | 125 A         | 3125        |               |                   |   |  | 5.50           |
|           | AE73150i25  | 150 A         | 3150        |               |                   |   |  | 6.00           |

|       |            |       |      |         |      |       |        |       |
|-------|------------|-------|------|---------|------|-------|--------|-------|
| 38x72 | AE73175i38 | 175 A | 3175 | 800 VDC | 50kA | 40000 | 104575 | 6.56  |
|       | AE73200i38 | 200 A | 3200 |         |      |       |        | 7.50  |
|       | AE73250i38 | 250 A | 3250 |         |      |       |        | 9.38  |
|       | AE73300i38 | 300 A | 3300 |         |      |       |        | 11.25 |
|       | AE73350i38 | 350 A | 3350 |         |      |       |        | 13.13 |
|       | AE73400i38 | 400 A | 3400 |         |      |       |        | 15.00 |

|       |            |       |      |         |      |        |        |       |
|-------|------------|-------|------|---------|------|--------|--------|-------|
| 51x72 | AE73450i51 | 450 A | 3450 | 800 VDC | 50kA | 104285 | 272643 | 15.00 |
|       | AE73500i51 | 500 A | 3500 |         |      |        |        | 16.67 |
|       | AE73560i51 | 560 A | 3560 |         |      |        |        | 18.67 |
|       | AE73600i51 | 600 A | 3600 |         |      |        |        | 20.00 |

**PART NUMBER SYSTEM**


- 1 .....Product Series ..... AE7  
 2 ..... Ampere Code ..... 60 A (see ampere code column of electrical specifications)  
 3 .....Rated Voltage ..... i: 800 V  
 4 ..... Supplementary Code ..... 25, 38, 51: default

**DIMENSIONS (mm)**


| Size  | A       | B      | C      | D       | E      | F        | G      | H       | J        |
|-------|---------|--------|--------|---------|--------|----------|--------|---------|----------|
| 25x66 | 111±0.8 | 25±0.5 | 66±0.8 | 95±0.8  | 93±0.8 | 9.0±0.2  | 18±0.5 | 3.2±0.1 | 10.0±0.5 |
| 38x72 | 129±0.8 | 38±0.5 | 72±0.8 | 107±0.8 | 89±0.8 | 10.5±0.2 | 25±0.5 | 6±0.1   | 19.5±0.5 |
| 51x72 | 129±0.8 | 51±0.5 | 72±0.8 | 109±0.8 | 90±0.8 | 10.5±0.2 | 38±0.5 | 6±0.1   | 20.0±0.5 |

Time Current Curve (reference)

