

AEE EV Fuse



FEATURES:

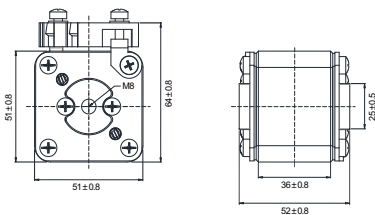
- 690 VAC automotive grade EV fuse
- Rated Current: 200-630 A
- Rated Breaking Capacity: 50 kA at 690 VAC
- Fast Acting fuse for EV/HEV, HV Connectors, Manual Service Disconnects (MSD)
- Ref. to IEC 60269-4

ELECTRICAL SPECIFICATIONS

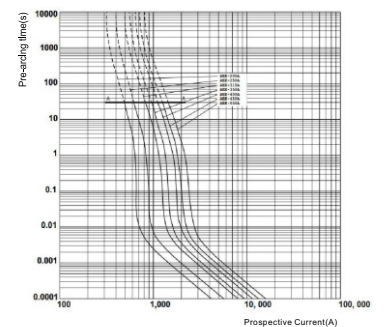
Part Number	Rated Current	Ampere Code	Rated Voltage	Breaking Capacity	0.5 In Dissipation (W)
AEE3200d00	200 A	3200	690 VAC	50 kA@690 VAC	5.4
AEE3250d00	250 A	3250			7.0
AEE3315d00	315 A	3315			8.6
AEE3350d00	350 A	3350			9.7
AEE3400d00	400 A	3400			10.5
AEE3450d00	450 A	3450			11.0
AEE3500d00	500 A	3500			12.0
AEE3630d00	630 A	3630			14.5

Note: (1) Temperature rise: <50 K.

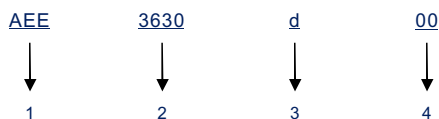
DIMENSIONS (mm)



TIME CURRENT CURVE



PART NUMBER SYSTEM



- 1 Product Series AEE
- 2 Ampere Code 630 A (see Ampere code column of electrical specifications)
- 3 Rated Voltage d: 690 VAC
- 4 Supplementary Code 00: default