

AT1 EVSE Fuse



FEATURES:

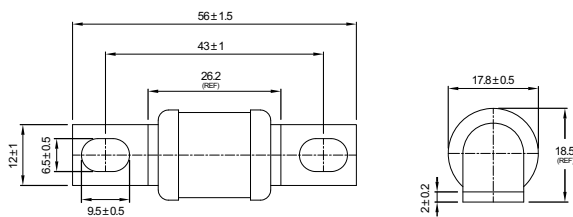
- 150 VDC EVSE fuse
- Rated Current: 20-200 A
- Rated Breaking Capacity: 20 kA at 150 VDC
- Size: 18x25 mm
- General purpose fuse for EV charging equipment
- Ref. to UL 248-13;UL 248-20, JASO D622 section test
- Approvals: UL (File: E485737)

ELECTRICAL SPECIFICATIONS

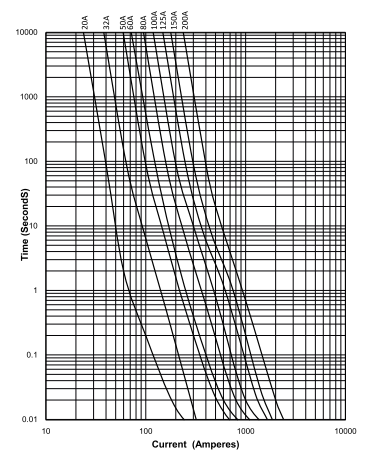
| Part Number | Rated Current | Ampere Code | Rated Voltage | Breaking Capacity | 1.0 In Dissipation (W) | Certifications UL |
|-------------|---------------|-------------|---------------|-------------------|------------------------|-------------------|
| AT12200105 | 20 A | 2200 | 150 VDC | 20 kA@150 VDC | 1.8 | • |
| AT12320105 | 32 A | 2320 | | | 3.5 | • |
| AT12500105 | 50 A | 2500 | | | 6.0 | • |
| AT12600105 | 60 A | 2600 | | | 7.5 | • |
| AT12800105 | 80 A | 2800 | | | 9.0 | • |
| AT13100105 | 100 A | 3100 | | | 11.0 | • |
| AT13125105 | 125 A | 3125 | | | 12.8 | • |
| AT13150105 | 150 A | 3150 | | | 16.2 | • |
| AT13200105 | 200 A | 3200 | | | 18.5 | • |

Note: (1) Temperature rise: <50 K.

DIMENSIONS (mm)



TIME CURRENT CURVE



PART NUMBER SYSTEM



- 1 Product Series AT1
- 2 Ampere Code 200 A (see Ampere code column of electrical specifications)
- 3 Size 1: 18x25 mm
- 4 Supplementary Code 05: default