

AT5 EVSE Fuse



FEATURES:

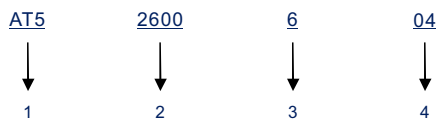
- 500 VDC EVSE fuse
- Rated Current: 60-200 A (30x50)
200-400 A (38x50)
- Rated Breaking Capacity: 20 kA at 500 VDC
- Size: 30x50 mm, 38x50 mm
- General purpose fuse for EV charging equipment
- Ref. to UL 248-13; UL 248-20, JASO D622 section test
- Approvals: UL (File: E485737)

ELECTRICAL SPECIFICATIONS

Size (mm)	Part Number	Rated Current	Ampere Code	Rated Voltage	Breaking Capacity	Certifications UL
30x50	AT52600604	60 A	2600	500 VDC	20 kA@500 VDC	•
	AT52700604	70 A	2700			•
	AT52800604	80 A	2800			•
	AT52900604	90 A	2900			•
	AT53100604	100 A	3100			•
	AT53125604	125 A	3125			•
	AT53150604	150 A	3150			•
	AT53175604	175 A	3175			•
	AT53200604	200 A	3200			•
38x50	AT53200B04	200 A	3200	500 VDC	20 kA@500 VDC	•
	AT53250B04	250 A	3250			•
	AT53300B04	300 A	3300			•
	AT53350B04	350 A	3350			•
	AT53400B04	400 A	3400			•

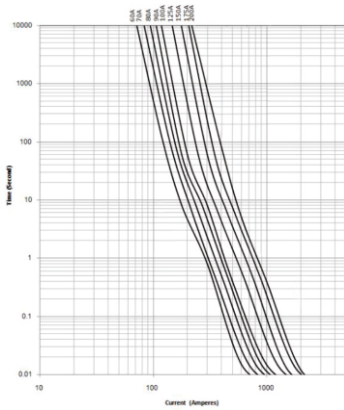
Note: (1) Temperature rise: <50 K.

PART NUMBER SYSTEM

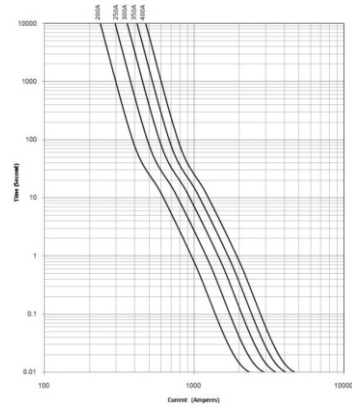


- 1 Product Series AT5
 2 Ampere Code 60 A (see Ampere code column of electrical specifications)
 3 Size 6: 30x50 mm; B: 38x50 mm
 4 Supplementary Code 04: default

TIME CURRENT CURVE (30x50)

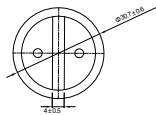
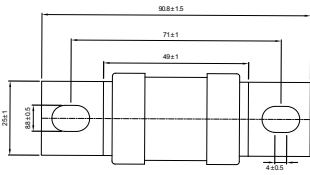


TIME CURRENT CURVE (38x50)



DIMENSIONS (mm)

AT5xxx604



AT5xxxB04

