

ATX EVSE Fuse



FEATURES:

- 1000 VDC EVSE fuse
- Rated Current: 250 A, 315 A, 350 A (Single)
400 A, 500 A, 600 A (Twins)
- Rated Breaking Capacity: 50 kA at 1000 VDC
- Size: 38x70 mm
- General purpose fuse for EV charging equipment
- Ref. to UL 248-13; UL 248-20, JASO D622 section test
- Approvals: UL (File: E485737)

ELECTRICAL SPECIFICATIONS

Type	Part Number	Rated Current	Ampere Code	Rated Voltage	Breaking Capacity	I ² t (A ² s)		Dissipation (W)		Certifications UL
						Pre-Arcing	Total	0.5 In	0.8 In	
Single	ATX3250C01	250 A	3250	1000 VDC	50 kA@1000 VDC	16500	52000	9	33	●
	ATX3315C01	315 A	3315			24000	77000	12	36	●
	ATX3350C01	350 A	3350			32000	100000	14	45	●
Twins	ATX3400C01	400 A	3400	1000 VDC	50 kA@1000 VDC	55000	140000	15	48	●
	ATX3500C01	500 A	3500			75000	190000	17	60	●
	ATX3600C01	600 A	3600			130000	320000	21	68	●

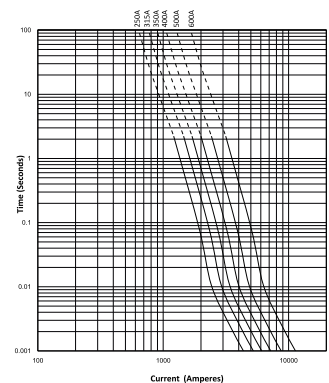
Note: (1) Temperature rise: <50 K.

PART NUMBER SYSTEM



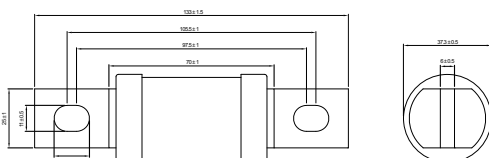
- 1..... Product Series ATX
- 2..... Ampere Code 250 A (see Ampere code column of electrical specifications)
- 3..... Size C: 38x70 mm
- 4..... Supplementary Code 01: default

TIME CURRENT CURVE



DIMENSIONS (mm)

ATXxxxxC01: Single



ATXxxxxC01: Twins

