

Lite-On Semiconductor Bluetooth EarPhone Platform Solutions



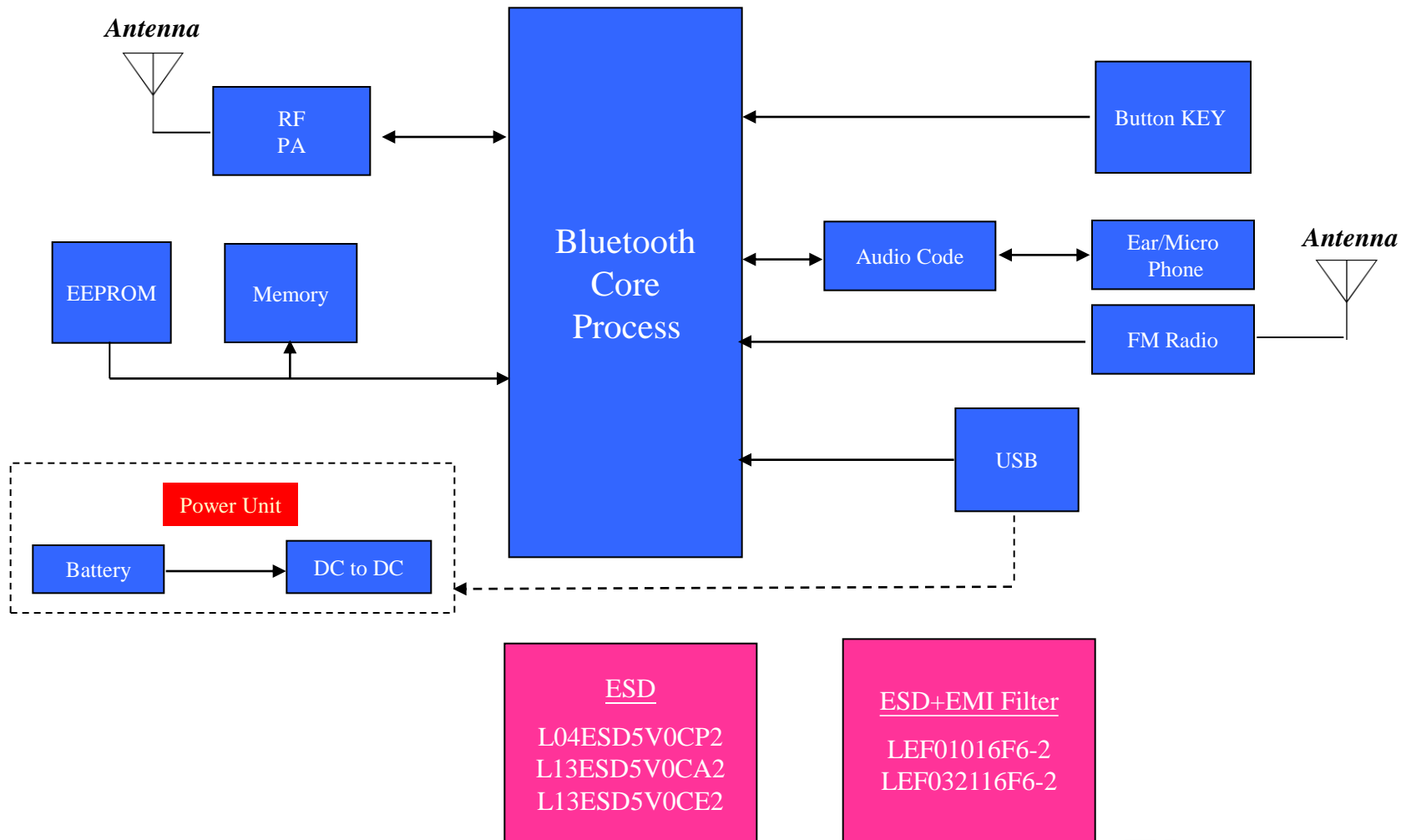
WORLD PRODUCTS, LLC

ELECTRONIC COMPONENT SOLUTIONS

sales@worldproducts.com || www.worldproducts.com

Exclusive agent in the America's for all Lite-On Semiconductor products.

Bluetooth Earphone Block Diagram



LSC Product Selection Guide

Surface Mount ESD Protection Device

Part Number	Peak Power Dissipation 8x20 s	Reverse standoff voltage	Max Reverse Leakage @ VR	Max Clamping Voltage @8x20 s	Peak Pulse Current 8x20 s	Off-State Capacitance 1MHz Zero DC Bias	Package
		VR	IR	Vc	Ipp	Co	
	W	V	uA	V	A	pF	
L04ESD5V0CP2	40	5	0.1	12.5	3.5	4.5 (typ)	SOD-923
L13ESD5V0CA2	130	5	0.1	14	12	45	SOD-523
L13ESD5V0CE2	130	5	0.01	14	12	45	SOD-923



LSC Product Selection Guide

Surface Mount ESD Protection Device with EMI Filter

Part Number	Peak Power Dissipation 8x20 s	Reverse standoff voltage	Max Reverse Leakage @ VR	Resistance	Off-State Capacitance 0MHz 2.5V DC Bias	Off-State Capacitance 1MHz Zero DC Bias	Package
		VR	IR	R	Co	Co	
	W	V	uA	Ohm	pF	pF	
LEF01016F6-2	----	5	5	10	----	160	SOT-563
LEF03216F6-2	-----	5	5	32	-----	160	SOT-563



L04ESD5V0CP2

4.5pF Bidirectional in SOD923

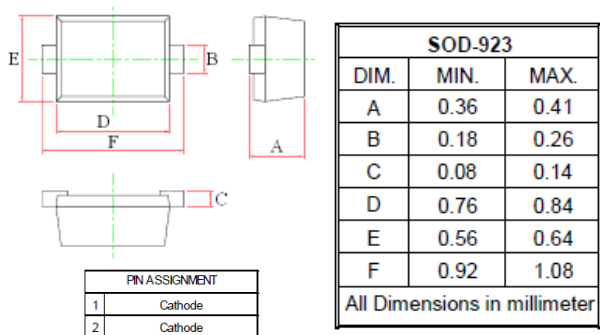
Features

- Bidirectional ESD Protection of Single Line
- Max. Peak Pulse Power is 40Watts @ 8/20us
- Low Clamping Voltage
- IEC 61000-4-2, Level 4 (ESD), >±15KV by Air, >±8KV by Contact

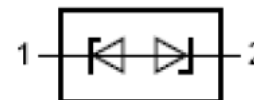
Applications

- Computers and Peripherals
- Communication System
- Portable Electronics
- Cellular handsets and Accessories
- Notebook, Desktops and Servers
- Audio & Video Equipment

Package & Dimension



Layout



L13ESD5V0CA2

130W Bidirectional in SOD523

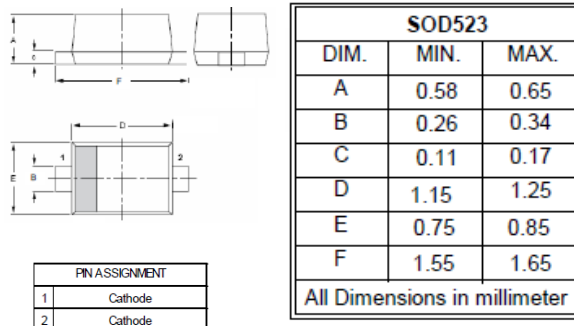
Features

- Bidirectional ESD Protection of Single Line
- Max. Peak Pulse Power is 130Watts @ 8/20us
- Low Clamping Voltage
- IEC 61000-4-2, Level 4 (ESD), >±15KV by Air, >±8KV by Contact
- IEC 61000-4-5, Level 1 (Surge), Ipp=12A @ 8/20us

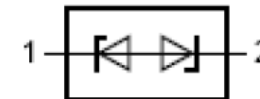
Applications

- Computers and Peripherals
- Communication System
- Portable Electronics
- Notebook, Desktops and Servers
- Audio & Video Equipment

Package & Dimension



Layout



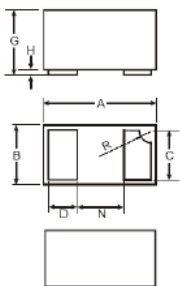
Features

- Bidirectional ESD Protection of Single Line
- Max. Peak Pulse Power is 130Watts @ 8/20us
- Low Clamping Voltage
- IEC 61000-4-2, Level 4 (ESD), >±15KV by Air, >±8KV by Contact
- IEC 61000-4-5, Level 1 (Surge), Ipp=12A @ 8/20us

Applications

- Computers and Peripherals
- Communication System
- Portable Electronics
- Notebook, Desktops and Servers
- Audio & Video Equipment

Package & Dimension

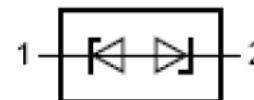


SOD-882		
DIM.	MIN.	MAX.
A	0.95	1.07
B	0.55	0.68
C	0.45	0.55
D	0.20	0.30
G	0.47	0.53
H	0.00	0.05
N	0.40 (Typ.)	
R	0.05	0.15

All Dimensions in millimeter

PIN ASSIGNMENT	
1	Cathode
2	Cathode

Layout



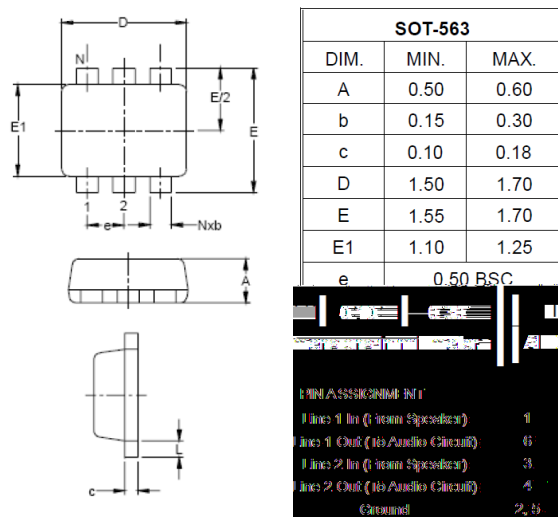
Features

- Bidirectional EMI/RFI Filter with Integrated ESD Protection
- Two Lines Protection and Filtering
- IEC 61000-4-2, Level 4 (ESD), >±15KV by Air, >±8KV by Contact

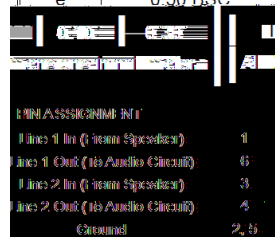
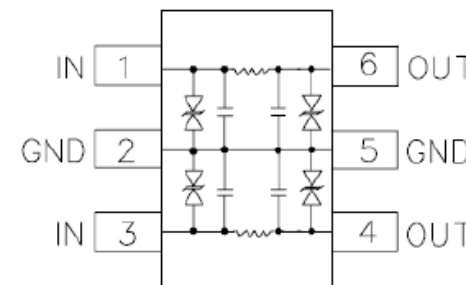
Applications

- Color LCD Protection
- Cell Phone CCD Camera Lines
- Clamshell /cell /phones
- Audio Filter
- Notebooks
- MP3 Players

Package & Dimension



Layout



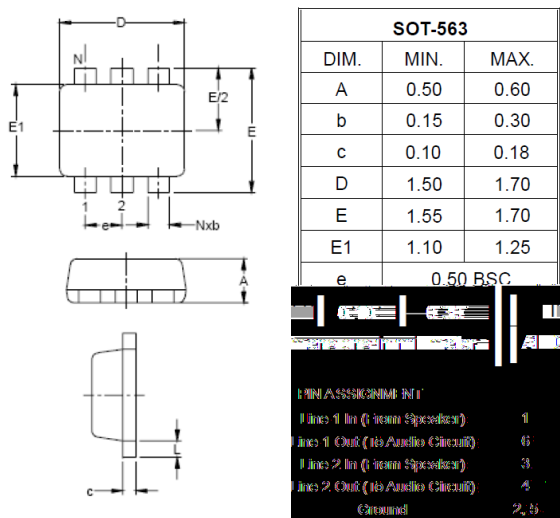
Features

- Bidirectional EMI/RFI Filter with Integrated ESD Protection
- Two Lines Protection and Filtering
- IEC 61000-4-2, Level 4 (ESD), >±15KV by Air, >±8KV by Contact

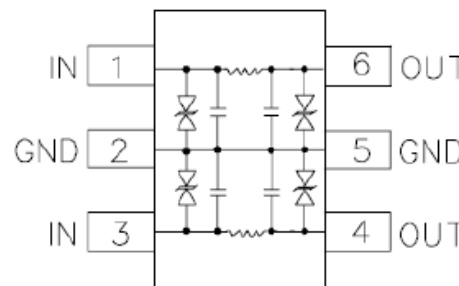
Applications

- Color LCD Protection
- Cell Phone CCD Camera Lines
- Clamshell /cell /phones
- Audio Filter
- Notebooks
- MP3 Players

Package & Dimension



Layout



MINI ASSIGMENT	Pin
Line 1 In (160pF Capacitor)	1
Line 1 Out (160pF Capacitor)	6
Line 2 In (160pF Capacitor)	3
Line 2 Out (160pF Capacitor)	4
Common	2, 5

