



RW SERIES

INDUSTRIAL RELAYS

UL & CUL File #E223388

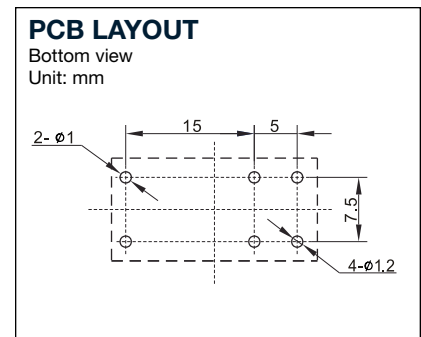
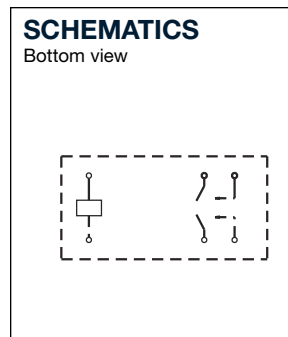
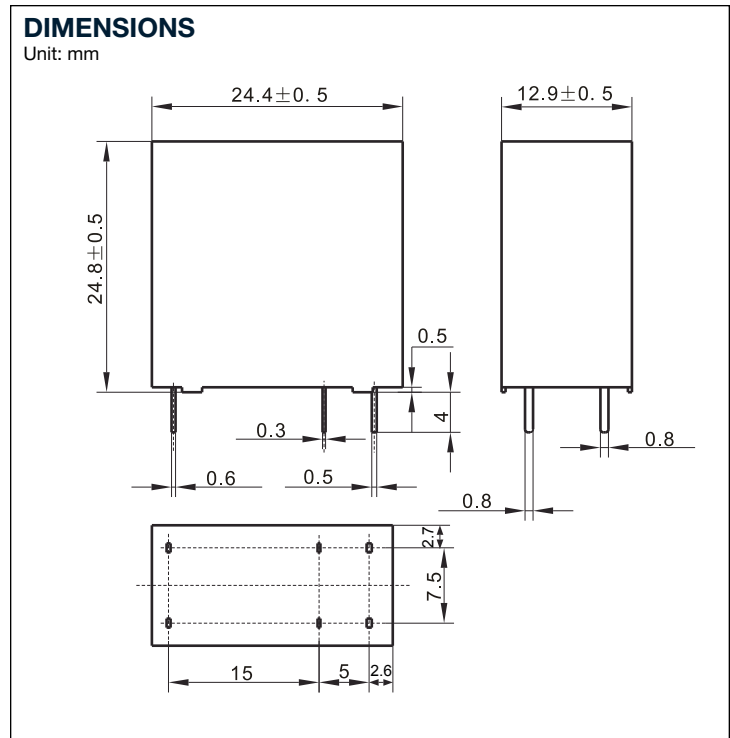
FEATURES

1. Small size for high density P.C. Board mounting.
2. Insulation distance of 6.0 mm designed for surge resistiveness of 5000 V.

ORDERING INFORMATION

RW 2A - 12 S
(1) (2) (3) (4)

- | | |
|--|--|
| (1) Basic Designation
RW = RW Series | (3) Coil Voltage
3~48V |
| (2) Coil Arrangement
2A = 2 Form A | (4) Enclosure
Nil = Unsealed type
S = Sealed type |



COIL RATINGS (AT 20°C)

Coil Nominal Voltage (VDC)	Nominal Current (mA)	Coil Resistance $\Omega(\pm 10\%)$	Drop-Out Voltage (VDC) min.	Pick-Up Voltage (VDC) max.	Nominal Operating Power (W)	Max. Allowable Voltage (VDC)
3	176.47	17	10%	75%	Abt. 0.54	130% of nominal voltage
5	106.38	47				
6	88.24	68				
9	44.44	155				
12	58.06	270				
18	30.00	600				
24	21.82	1,100				
48	10.91	4,400				



CONTACT RATINGS

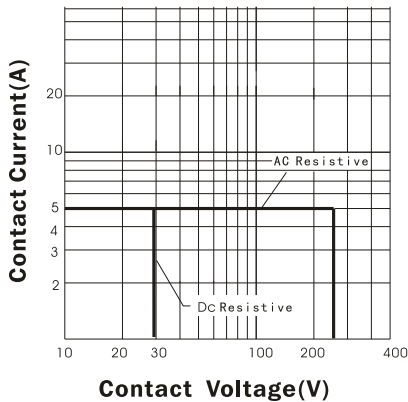
Contact Arrangement	2A
Max. Switching Power	1200VA 150W
Max. Switching Voltage	250VAC 30VDC
Max. Switching Current	5A
Contact Resistance (By voltage drop 6V 1A)	50mΩ max.
UL/ C-UL Rating	5A / 240VAC
Resistive Load (cos Ø = 1)	5A / 30VDC
Inductive Load (cos Ø = 0.75 ~ 0.8)	2A / 240VAC
Contact Material	silver alloy

CHARACTERISTICS

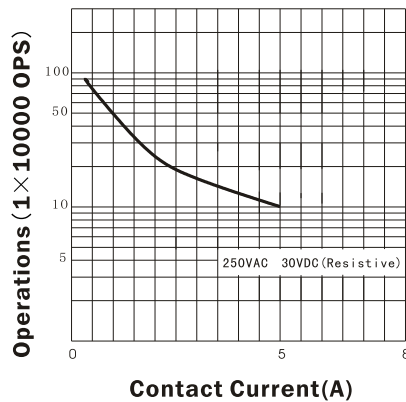
Electrical Life (at 30cpm)	1 x 10 ⁵
Mechanical Life (at 300cpm)	1 x 10 ⁷
Initial Insulation Resistance	1000MΩ Min. (500VDC)
Operate Time	20ms max.
Release Time	10ms max.
Initial Breakdown Voltage	50/60Hz 1000VAC 1 min. (between open contacts) 50/60Hz 3000VAC 1 min. (between coil & contact)
Vibration Resistance	Functional: 10 to 55Hz at double Amplitude of 1.5mm Destructive: 10 to 55Hz at double Amplitude of 1.5mm
Shock Resistance	Functional: Min. 10G Destructive: Min. 100G
Ambient Temperature	-30°C ~ +85°C
Operating Humidity	45 to 85% RH
Unit Weight	Approx. 13 g

REFERENCE DATA

MAXIMUM SWITCHING POWER



LIFE CURVE



COIL TEMPERATURE RISE

