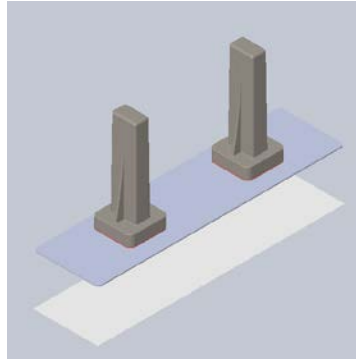


WPANT30101-S1A

ISM Dual-band RFLAN & Wi-Fi Body-Mount MIMO Antenna Assembly



Description / Application

This kit contains two ISM Dual-Band RFLAN & Wi-Fi body-mount antennas that are 95.50mm apart (WPANT30003-CC) , one 1mm stainless steel plate with a D-shape hole (WPANT50021-S1A-01A, and one 2 mils thick of sticker tape (WPANT50021-S1A-02A).

The WPANT30003-CC body-mount antenna is a 915 MHz & 2.4 GHz ISM Band & Wi-Fi Omni Directional Body-mount Antenna, which is ideal for mounting on any metal structures / surfaces.

We specialize in developing customized Antenna solutions. Please contact sales@worldproducts.com with your specific application requirements.

Electrical Properties

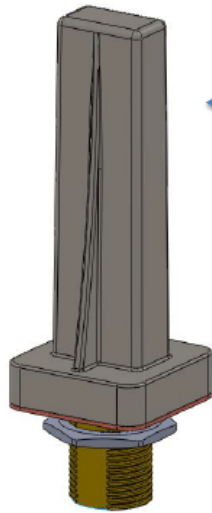
Operating Frequency	902 – 928 MHz	2.4 – 2.5 GHz
Approximate Antenna Impedance [Ω]	50Ω	50Ω
VSWR – Typical*	< 2:1	< 2:1
Peak Gain [dBi] (Typical)*	2 dBi	3 dBi
Efficiency [%] (Typical)*	80 %	70 %
Polarization	Linear	Linear
Pattern	Near Omni-directional; Also depends on installation	Near Omni-directional; Also depends on installation

Mechanical / Environmental Properties

Antenna Dimensions	3.0" X 1.2" X 1.2" (76mm X 30mm X 30mm)
Antenna Color	White
Connector	Type-N Female Jack with a Flat edge
Antenna Radome	ABS + Polycarbonate
Washer & other outer Metal Parts	Stainless Steel
Main Gasket covering the Base	1.5mm thick Black 3M Gasket
Connector Plating	Nickel + Chromium Alloy
Operating / Storage Temperature	-40°C to +90°C
Environmental	Meets standards for UL 94V-0
Hazardous Materials	RoHS Compliant

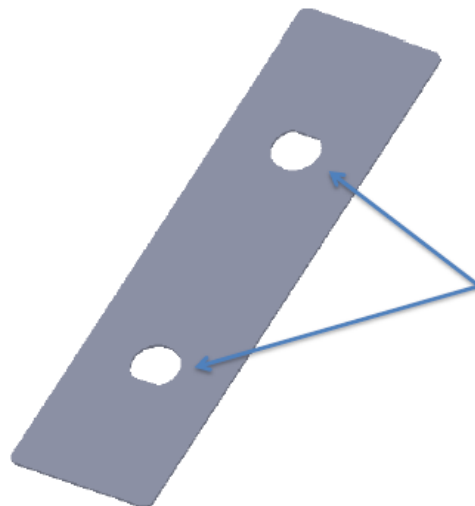
Parts of the Antenna Assembly

WPANT30003-CC antenna



← Assembly is exactly the same as the current WPANT30003-CC assembly.

WPANT50021-S1A-01A Stainless Steel Plate



Hole has a D-Shape Profile

WPANT50021-S1A-02A paper sticker template

